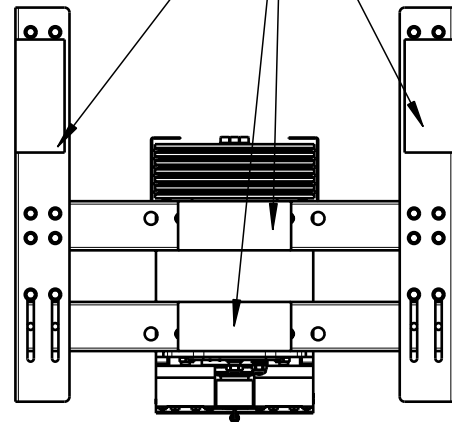


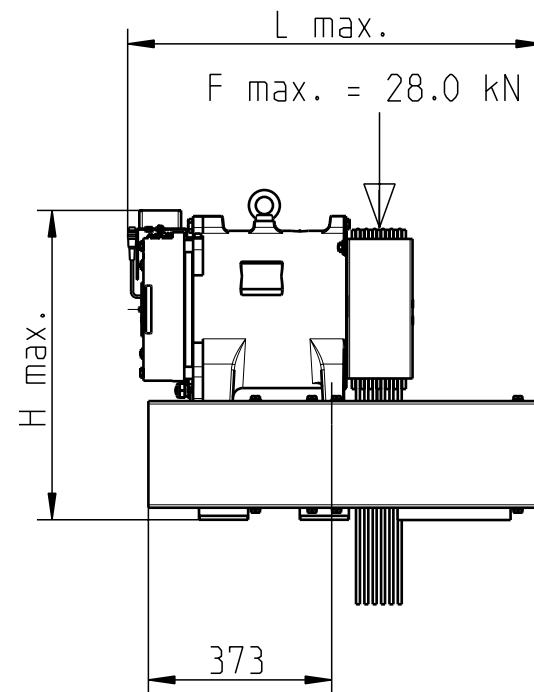
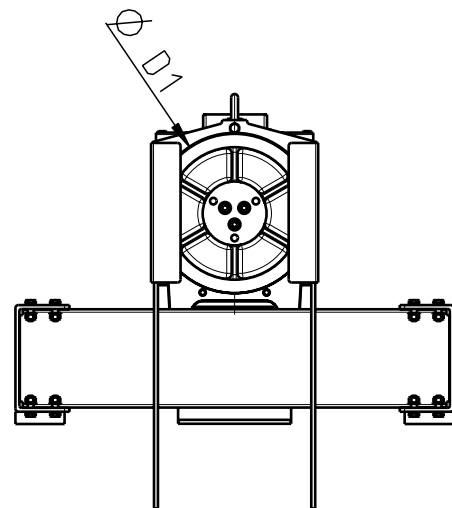
MF2800

Maschinen
isolierung
insulation
elements

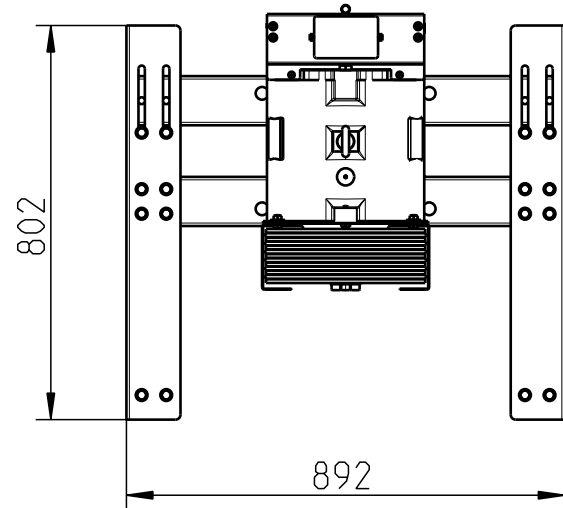


Gewicht Rahmen ohne Motor: 90 kg
Weight frame without machine: 90 kg

Motortyp Motor type	Treibscheibe Traction sheave Ø D1 mm
SM160.30B/40B	160-240
SM190.15/23	200-240
SM200.15C/20C/30C	160-450

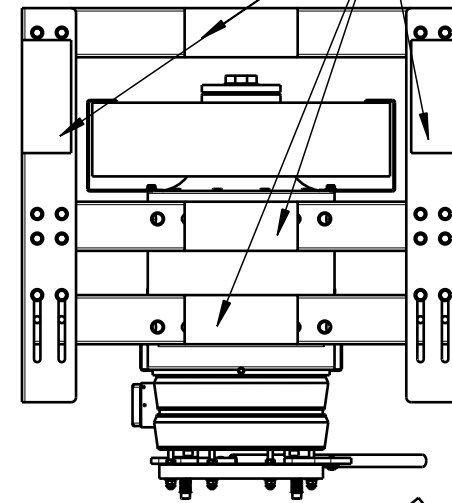


Motortyp Motor type	H max. mm	L max. mm
SM160.30B/40B	853	896
SM190.15/23	681	777
SM200.15C/20C/30C	860	833



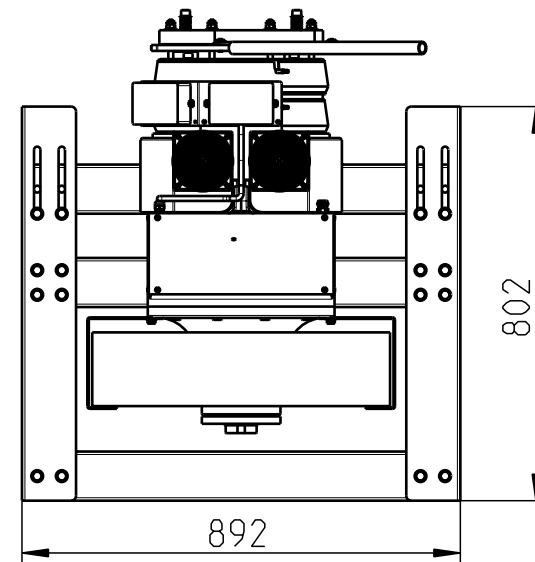
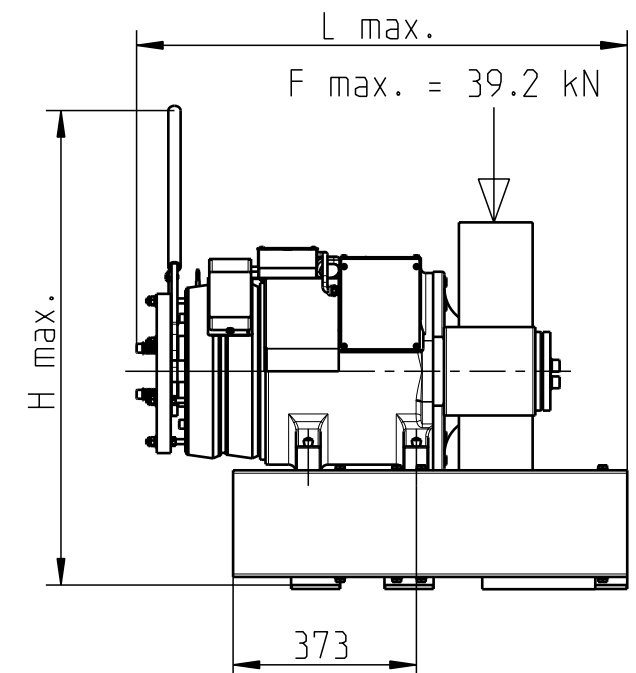
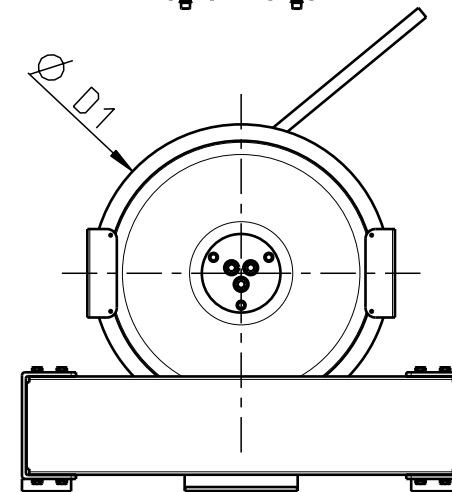
MF4000

Maschinen
isolierung
insulation
elements



Gewicht Rahmen ohne Motor: 114 kg
Weight frame without machine: 114 kg

Motortyp Motor type	Treibscheibe Traction sheave Ø D1 mm
SM200.40C/45D	160-500
SM225.40B	320-600
SM225.45C	240-400



Motortyp Motor type	H max. mm	L max. mm
SM200.40C/45D	1406	1117
SM225.40B/SM225.45C	1161	973

ZIEHL-ABEGG

ZIEHL-ABEGG SE
Heinz-Ziehl-Strasse
74653 Kuenzelsau
Germany
Tel. +49 7940 16-0
www.ziehl-abegg.com

Darstellung schematisch gezeichnet -
Änderungen vorbehalten
schematical drawn image -
subject to modifications

This drawing is property
of ZIEHL-ABEGG SE. The reproduction,
distribution and utilization is subject
to authorization. All rights reserved.

Benennung
title ZAframe MF2800 / MF4000

Index index	Änderung revision	Datum date	Name name
A03	A17_0078	22.05.2017	kues
	erstellt drawn	21.07.2014	scho
	geprüft checked	22.05.2017	krp

Maße in mm
dimensions in mm

Zeichnungsnummer
drawing number

A-M-6632